

# THERMAL OIL COOLING: EFFICIENT & RELIABLE COOLING

## HIGHLIGHTS

- Easy & Simple Installation due to integration of both measurement and control
- Combined solution enables for fast and rapid control
- Digitalization of the asset with real time data
- Heat exchanger lifetime prolongation with extensive data insight



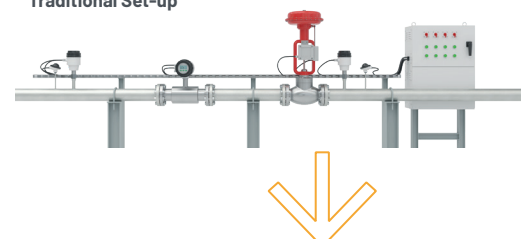
## 1. BACKGROUND

Arcelor Mittal is a global steel and mining company. With operations in over 60 countries, it is the world's largest steel producer. The company is involved in every aspect of the steel industry, from mining and processing raw materials to manufacturing and distribution of steel products. Arcelor Mittal is known for its diversified portfolio, innovative technologies, and commitment to sustainability. It plays a crucial role in supplying steel for various sectors, including automotive, construction, and infrastructure.

## 2. FOCUS-ON SOLUTION

By replacing the traditional valve with a FOCUS-1, the process operator maintains all required control & monitoring capabilities with additional insights into the efficiency of the heat exchanger. By combining all the measurement & control components in one device, the operator can, based on the data collected by FOCUS-1 decide the best control behavior regardless of any process condition changes. Instead of having a separate temperature sensor connected to the DCS to determine the setpoint of the control valve. The temperature setpoint can be given directly to FOCUS-1 via conventional communication protocols. FOCUS-1 internal PID Controller determines the best valve position for the desired flow rate.

Traditional Set-up



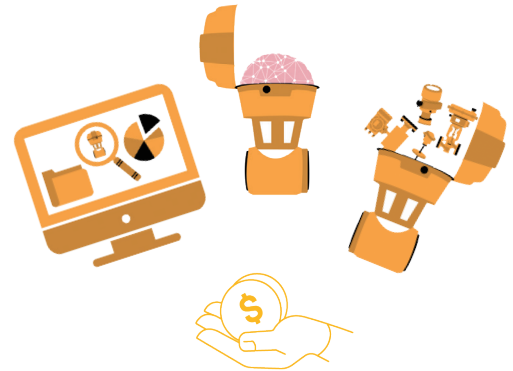
### 3. FOCUS-ON SOLUTION

By replacing the traditional valve with a FOCUS-1, the process operator maintains all required control & monitoring capabilities with additional insights into the efficiency of the heat exchanger. By combining all the measurement & control components in one device, the operator can, based on the data collected by FOCUS-1 decide the best control behavior regardless of any process condition changes. Instead of having a separate temperature sensor connected to the DCS to determine the setpoint of the control valve. The temperature setpoint can be given directly to FOCUS-1 via conventional communication protocols. FOCUS-1 internal PID Controller determines the best valve position for the desired flow rate.



### 4. CUSTOMER BENEFITS

A faster and more stable control results in a higher performance of the heat exchanger. This results in lower energy consumption in periods of less heat supply or more production demand. During this period FOCUS-1 collects all data including control behavior & measurement parameters of to the Heat Exchanger. In case of any changes in process conditions FOCUS-1 will detect, alarm and advise in case necessary. This all resulting in a longer lifetime with lower OPEX expenditure.



### 5. PRODUCT USED

FOCUS-1

- The Smart Meter Valve For Flow, Pressure and, Process Control.
- An All-In-One solution features, control valve, flowmeter, pressure and temperature sensors.
- All components are standard SAMSON & KROHNE Devices successfully used for decades.
- All sensors are designed redundantly.



#### FOCUS-ON VoF

Kerkeplaat 12  
3313 LC Dordrecht  
the Netherlands

Tel.: +31 682633713  
info@fon-p.com  
focus-on-process.com

WANT TO LEARN MORE ABOUT  
HOW FOCUS-1 IS USED?

**SCAN THIS QR-CODE**



website